

A DUE • Sugar dissolving • Final beverage storage
Emptying and mixing • Deaeration and homogenization
Plant sanification • **JUICY TECHNOLOGY**
SINCE 1967 • In line blending and carbonation
Minor ingredient • Fruit pieces • Granulated sugar handling
Fruit slurry pasteurization • Concentrate handling
Control room • **SPARKLING IDEAS**
Final drink carbonation • Stabilizers dissolving
Final beverage mixing • Sugar syrup • **ITALY**
Pasteurization • Aseptic process
In line dosing and mixing • Water treatment



Juicy
Technology
and Sparkling
Ideas

EASY SOLUTIONS
for Water Treatment



A DUE di Squeri Donato & C. S.p.A.

www.adue.it • info@adue.it



Water treatment plants - EASY.Water

(EN) A DUE: Designs, Manufactures and Installs complete plants for management and treatment of the water used for the preparation of beverages, offering a wide range of solutions. Depending on the initial water characteristics and on the desired quality, various treatments and technologies, enhanced by the use of high quality components, can be combined for processing of more than 100.000 l/h.

(ES) A DUE: Diseña, Construye, Instala sistemas completos para la gestión y el tratamiento de agua utilizados en la preparación de bebidas, ofreciendo una amplia cartera de soluciones. En función de los análisis de agua y los resultados a obtener, utilizando componentes de alta calidad, se pueden combinar diferentes tratamientos y tecnologías para el tratamiento de más de 100.000 l/h.

(FR) A DUE: Conçoit, Construit et Met en Place des installations complètes pour la gestion et le traitement de l'eau utilisée dans la préparation des boissons, en proposant un riche portfolio de solutions. En fonction des analyses de l'eau et du résultat que l'on veut obtenir, en utilisant des composants de haute qualité, on peut combiner différents traitements et technologies pour traiter plus de 100.000 l/h.

(IT) A DUE: Progetta, Costruisce, Installa impianti completi per la gestione e trattamento dell'acqua utilizzata nella preparazione delle bevande, proponendo un ricco portfolio di soluzioni. In funzione delle analisi dell'acqua e del risultato che si vuole ottenere, utilizzando componentistica di alta qualità, si possono combinare diversi trattamenti e tecnologie per trattare oltre 100.000 l/h.

EASY.Water



Preliminary treatment

(EN) Water intake, Chlorination, Filtration

- Water intake from wells or city mains (Entry.Point).
- Preliminary disinfection (First. Chlorination).
- First filtration by means of: self-cleaning filter and/or sand filter and/or Ultrafiltration - **EASY.UF** - and/or carbon filter.

(ES) Recepción, cloración, filtración

- Recepción de agua de pozo o de acueducto (Entry.Point).
- Desinfección preliminar (First. Chlorination).
- Primera Cloración con: filtro autolimpiante y/o un filtro de arena y/o ultrafiltración - **EASY.UF** - y/o filtro de carbón.

(FR) Réception, Chloration, Filtrage

- Réception de l'eau de puit ou de station de pompage (Entry.Point).
- Désinfection préliminaire (First. Chlorination).
- Filtrage initial avec: filtre autonettoyant et/ou filtre à sable et/ou Ultrafiltration - **EASY.UF** - et/ou filtre à charbon.

(IT) Ricevimento, Clorazione, Filtrazione

- Ricevimento acqua di pozzo o da acuedotto (Entry.Point).
- Disinfezione preliminare (First.Chlorination).
- Prima filtrazione con: filtro autopulente e/o filtro a sabbia e/o Ultrafiltrazione - **EASY.UF** - e/o filtro a carbone.



EASY.UF



Final treatment

(EN) Demineralization, Disinfection and Deaeration

- Demineralization by means of Reverse Osmosis - **EASY.RO**.
- Disinfection by means of UV lamps or through ozone dosage - **EASY.Ozone**.
- Single-stage or double-stage deaeration (Deaerator.Unit).

(ES) Desmineralización, desinfección, desaireación

- Desmineralización por ósmosis inversa - **EASY.RO**.
- Desinfección por lámparas UV o con el dosaje de ozono - **EASY.Ozone**.
- Desaireación de una o dos etapas (Deaerator.Unit).

(FR) Déminéralisation, Désinfection, Désaération

- Déminéralisation par Osmose Inverse - **EASY.RO**.
- Désinfection par lampes à rayons ultraviolets UV ou par dosage d'ozone - **EASY.Ozone**.
- Désaération à simple ou double stade (Deaerator.Unit).

(IT) Demineralizzazione, Disinfezione, Deaerazione

- De-Mineralizzazione tramite Osmosi Inversa - **EASY.RO**.
- Disinfezione mediante lampade UV oppure con dosaggio ozono - **EASY.Ozone**.
- Deaerazione a singolo o doppio stadio (Deaerator.Unit).



EASY.RO

Salts and flavourings dosage - Easy.RM

EN **A DUE:** Designs, Manufactures and Installs complete plants for salts and flavourings in-line micro dosing, offering the solutions for:

- Dissolution in water of mineral salts (concentrated solutions).
- In-line and continuous dosing of the concentrated solution.
- Rigorous control of flow capacity, pH and conductivity.
- Final disinfection with the use of UV lamps, ozone - **EASY.Ozone**, or with thermal treatments.

ES **A DUE:** Diseña, Construye, Instala sistemas completos para micro-dosificación en línea de sales y aromas, que ofrecen soluciones completas para:

- Disolución de sales en agua (solución concentrada).
- Dosificación en línea y continua de la solución concentrada.
- Controles precisos de flujo, pH y conductividad.
- Desinfección por lámparas UV, con el ozono - **EASY.Ozone**, o con tratamientos térmicos.



EASY.Ozone



FR **A DUE:** Conçoit, Construit et Met en Place des installations complètes pour le microdosage en ligne de sels et aromes, en proposant des solutions complètes pour:

- Dissolution des sels dans l'eau (solution concentrée).
- Dosage en ligne et en continu de la solution concentrée.
- Contrôles minutieux de capacité, pH et conductivité.
- Désinfection finale par rayons UV, par ozone - **EASY.Ozone**, ou par traitements thermiques.

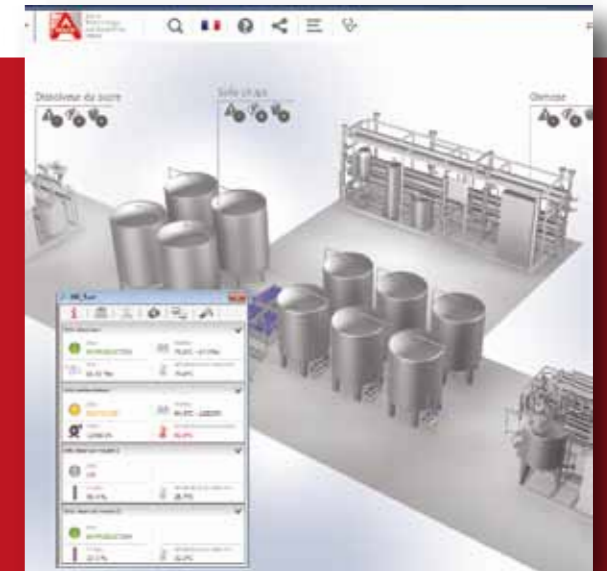
IT **A DUE:** Progetta, Costruisce, Installa impianti completi per il micro-dosaggio in linea di sali e aromi, proponendo soluzioni complete per:

- Dissoluzione dei sali in acqua (soluzione concentrata).
- Dosaggio in linea ed in continuo della soluzione concentrata.
- Accurati controlli di portata, pH e conducibilità.
- Disinfezione finale con UV, con ozono - **EASY.Ozone**, o con trattamenti termici.

AUTOMATION - EASY.Drive

Thanks to a team of qualified professionals specialized in Beverage Processing, **A DUE** develops and implements customized management programs using its own SCADA **EASY.Drive** or the most widespread platforms (Siemens WinCC TIA Professional, Wonderware/System Platform, Rockwell Factory Talk, etc.), according to the following drives:

- **intuitive management**, according to thematic areas, for immediate understanding by the operator;
- **access control** and management of different access level operators' passwords by means of LDAP protocol;
- **data acquisition** with Client-Server architecture and with redundant Servers;
- **operational reporting** to service the production and/or maintenance managers;



- **data sharing** through corporate networks;
- **easy integration** with the other existing SCADA installations;
- **traceability and total control** of the beverage preparation process, including management of the trends, alarms, log-events, process and plant parameters;
- **connectivity** of the customer: remote access, through tablet PC or smartphone;
- **assistance** provided by **A DUE** technicians through remote access via VPN;
- **active diagnostics** for fault management, plant alarms, trouble-shooting and planned maintenance;
- **plant intelligence pack**, for ingredients consumption and service fluids and energy demand counting, with calculation of plant OEE performance (KPI indices or availability, quality and yield performance).

EASY.Drive

EN **A DUE:** has developed the research project "Less-Water Bev. Tech" (nicknamed NIAGARA) aimed at recovering and reusing of the water intended to be drained during the processes of beverages preparation and bottling, through a combination of innovative technical solutions and water treatment technologies.

ES **A DUE:** desarrolló el proyecto de investigación "Less-Water Bev. Tech" (nickname NIAGARA) para la recuperación y reutilización de agua destinado al drenaje, durante el proceso de preparación y embotellado de bebidas, a través de una combinación de arreglos de plantas y tecnologías de tratamiento innovadoras.

Process water recovery - NIAGARA

FR **A DUE:** a développé le projet de recherche "Less-Water Bev. Tech" (pseudo NIAGARA) visant à récupérer et réutiliser l'eau destinée au drainage, pendant le processus de préparation et embouteillage des boissons, par une combinaison innovatrice d'astuces d'installation et technologies de traitement.

IT **A DUE:** ha sviluppato il progetto di ricerca "Less-Water Bev. Tech" (nickname NIAGARA) volto al recupero ed al riutilizzo dell'acqua, destinata al drenaggio, durante il processo di preparazione ed imbottigliamento delle bevande, attraverso una combinazione innovativa di accorgimenti impiantistici e tecnologie di trattamento.



Co-funded by the Eco-Innovation Initiative of the European Union